



GURKAN

GURKAN OFIS MOBİLYALARI SAN. TİC. LTD. ŞTİ.
Kayseri Serbest Bölgesi - KAYSERİ / TÜRKİYE
Tel: 0090 352 311 53 80 (pbx) Fax: 0090 352 311 53 90-91
www.gurkan.com.tr info@gurkan.com.tr



GURKAN

GÜRKAN

Gürkan Office Furniture is continuing his activities in his sector since 1976. The first big production facility has been built in 1992 over 20.000 sqm area. The company kept growth by using the new technology and composing his team by skilled human resources and optimal use of the reserves. Together with the continuity of the demands, growth has been supported by the new production plant which has been put under power on an area of 160.000 sqm.

Gürkan Office Furniture preserves the leading position in the office furniture branch in Turkey since has been established. The customer satisfaction and continuity of this satisfaction is on priority. The company using the rapidly developing production technologies enhances the products and the services bringing plus values to his sector. All the organization uses the resources on a most efficient way. Environmental and public values are respected and reflected as the culture of the establishment. On a direction of customer demands and expectations, the company Gürkan Office Furniture intends to be a well known and trusted brand.

The products have the GS labels certified by LGA, the services and overall quality is assured by means of ISO 9001, ISO 10002, ISO 14001, OHSAS 18001 standards. To keep up these standards, our company has a dynamic and active team of 650 employees including 20 administrative and 30 technical staff.

The heart of this dynamism is the harmony set up the by company between the customers and the suppliers together with his employees. This energy powered by the customer satisfaction helps us to deliver functional and quality products on time.

On our rapidly changing globalize world, we are using all our resources to be competitive and continuing to serve optimum quality and better service.

Our best wishes to improve all together...

Quality Policy

- get the best out of our resources to secure the continuity of customer satisfaction and guarantee "satisfied customer" principle within our whole organizational structure
- exist with an institutional culture understanding respectful to environmental and social values
- inhabit and perpetuate the team spirit and secure the satisfaction of the team
- use and lead the rapidly developing production technology and bring plus values to our sector
- improve continuously the quality and kinds of our products and the service we provide
- be in accordance with the quality management system requirements

Our Mission

- produce goods according to customer needs and secure a continuous "customer satisfaction"

Our Vision

- to be a reliable, well known, respected brand in our sector

Customer Satisfaction Policy

- accept as our basic principle to supply customer demands towards customer satisfaction and to return back all feedback (including complaints) as soon as possible
- focus all our working systematic for customer satisfaction,
- consider and recognize the provisions of laws and regulations, our fiscal and management conditions, and all feedbacks placed from our customers, staff, and other parties

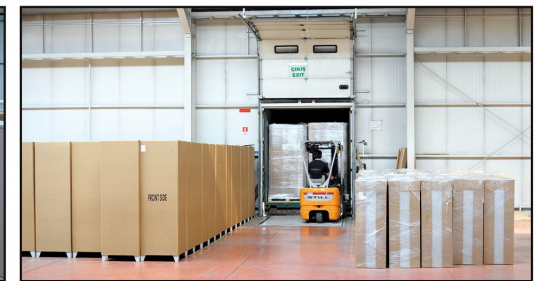
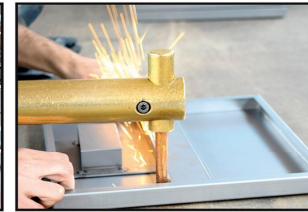
Environment Policy

- lower the use of hazardous materials during the production steps in order to reduce the operations harmful to human health and environment.
- follow the environmental laws and regulations
- secure continuous improvement by getting the support of our all employees

Occupational Safety Policy

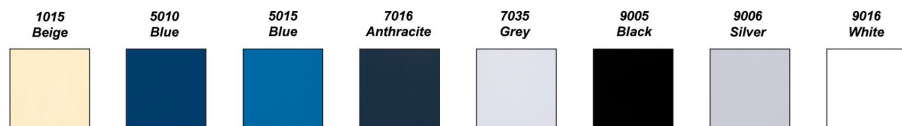
- reduce the rate of accidents by analyzing the risks in order to develop a working environment which is based on health and security.
- use the resources efficiently for health and security and provide the training of staff
- secure the continuous improvement by obeying the law and regulations



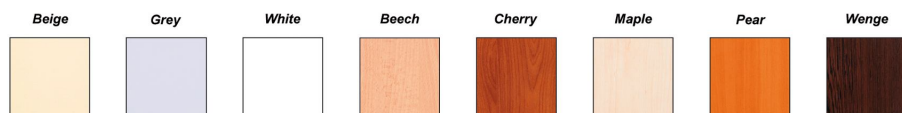


COLOR CHART

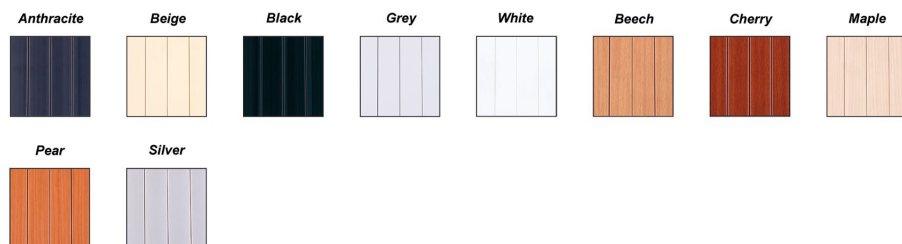
Standard Metal Colors



Standard Melamine Colors



Standard Shutter Colors



- This is a general chart including all standard colors. However, each range has its own colors mentioned in product pages.

- Minimum order quantity is required if above colors are not provided in product pages.

- Other colors are available on request with minimum order requirement.

- Please ask for real color samples for an exact match.

INDEX

| MAIN GROUP | SUBGROUP | RANGE | PAGE |
|---------------------------------|--------------------------------|--------------------------|---------|
| OFFICE FURNITURE | FILING CUPBOARDS | STANDARD MODELS | 012-013 |
| | | 180° HINGED DOOR | 014-015 |
| | | EXTERIOR LID | 016-017 |
| | | RECESSED WOODEN DOORS | 018-019 |
| | | FLATPACK | 020-021 |
| | SHUTTER DOOR CUPBOARDS | WELDED | 022-023 |
| | | FLATPACK | 024-025 |
| | SLIDING METAL DOOR CUPBOARDS | WELDED | 026-027 |
| | | FLATPACK | 028-029 |
| | SLIDING GLASS DOOR CUPBOARDS | WELDED | 030-031 |
| | | FLATPACK | 032-033 |
| | TURNING FOLDER RACKS | | 034-035 |
| | | | 036-037 |
| | MAP-PLAN CABINETS | FLUSH DRAWERS | 038-039 |
| | | GOOSENECK HANDLE DRAWERS | 040-041 |
| | MULTI-DRAWERS | A3 - A4 | 042-043 |
| | | SINGLE - DOUBLE | 044-045 |
| | FILING CABINETS | | 046-047 |
| | | | 048-049 |
| | CARD & INDEX CABINETS | | 050-051 |
| | | | 052-053 |
| | MOBILE PEDESTALS | GOOSENECK HANDLE | 054-055 |
| | | SIDE HANDLE | 056-057 |
| | OFFICE DESKS | | 058-059 |
| | | GOOSENECK HANDLE | 060-061 |
| | DESK END PEDESTALS | | 062-063 |
| | | | 066-067 |
| EDUCATIONAL FURNITURE | MULTIMEDIA PEDESTALS | | 068-069 |
| | | | 070-071 |
| | COMBINED CABINETS | | 072-073 |
| | | | 074-075 |
| | MAGAZINE CUPBOARDS | | 078-083 |
| TABLES & CHAIRS | LIBRARY SHELVES | | 084-085 |
| | | | 086-087 |
| | BOOKCASES | | 088-089 |
| | | | 090-091 |
| | TV & MEDIA CUPBOARDS | | 094-095 |
| MAILROOM FURNITURE | SCHOOL DESKS | | 096-097 |
| | | | 100-105 |
| | STANDARD TABLES | SQUARE LEG | 106-109 |
| | | ROUND LEG | 110-115 |
| | FOLDING TABLES | | 116-117 |
| WARDROBES & LOCKERS | CHAIRS | | 118-121 |
| | | | 122-123 |
| | FASTFOOD TABLES | | 124-125 |
| | | | 126-127 |
| | MAILBOX CUPBOARDS | | 128-129 |
| | | | 130-131 |
| | MAIL SORTING ITEMS | | 132-133 |
| | | | 134-139 |
| | WARDROBE CUPBOARDS | CLEAN INDUSTRY | 140-143 |
| | | DIRTY INDUSTRY | 144-147 |
| | 1/2 DOORS | | 148-151 |
| | | | 152-153 |
| | Z-TYPES | | 154-155 |
| | | | 156-157 |
| | LOCK & OTHER OPTIONS | | 158-159 |
| | | | 162-163 |
| | BENCHES | SEPARATE BENCHES | 164-165 |
| | | BENCH UNITS | 166-167 |
| | FIREMAN CUPBOARDS | | 168-169 |
| | | | 172-173 |
| | POLICEMAN CUPBOARDS | | 174-175 |
| | | | 176-177 |
| | CUBE LOCKERS | | 178-179 |
| | | | 180-181 |
| LAUNDRY & CLEANING CUPBOARDS | MULTI-CASE LOCKERS | STANDARD | 184-185 |
| | | VISIBLE DOORS | 186-187 |
| | SCHOOL CUPBOARDS | LAMINATE DOORS | 190-191 |
| | | | 192-193 |
| | CLOAKROOM STORAGE UNITS | | 196-197 |
| WORKSHOP & INDUSTRIAL FURNITURE | WALL LOCKERS | | 200-201 |
| | | | 202-203 |
| | PERSONAL EFFECTS LOCKERS | | 204 |
| | | | 205 |
| | LAPTOP STORAGE LOCKER | | 206-207 |
| SAFES | LAUNDRY CUPBOARDS | | |
| | | | |
| | GARMENT COLLECTORS | | |
| | | | |
| | GARMENT RACKS | | |
| SHELVING SYSTEMS | CLEANING CUPBOARDS | | |
| | | | |
| | INDUSTRIAL PC CABINET | | |
| | | | |
| | MOBILE TOOL CABINETS | | |
| HOSPITAL & MEDICAL FURNITURE | WORKBENCHES | | |
| | | | |
| | MULTI-PURPOSE STORAGE CUPBOARD | | |
| | | | |
| | CHEMICAL STORAGE CUPBOARDS | | |
| OTHERS | FIRE SAFE CUPBOARDS | | |
| | | | |
| | SAFE BOX | | |
| | | | |
| | BOLTED SHELF SYSTEM | | |